

KONA



MODEL		KONA
Variant		2.0 GLS 6A/T
Transmission		6-Speed A/T
Seating Capacity		5
ENGINE		
Type		2.0 NU MPI Atkinson (Euro 4)
Maximum Output	ps / rpm	149 / 6,200
Maximum Torque	kg-m / rpm	18.3 / 4,500
Fuel Type		Gasoline
Fuel Tank Capacity	L	50
CHASSIS		
Suspension	Front	MacPherson Strut
	Rear	Coupled Torsion Beam Axle
Brakes	Front/Rear	Ventilated Disc/Disc
Wheels/Tires		7.0Jx17 Alloy / 215/55 R17
STEERING		
Steering Type		Motor-Driven Power Steering (MDPS)
Steering Column		Tilt & Telescopic-Adjustable
DIMENSIONS		
Length x Width x Height	mm	4,165 x 1,800 x 1,550
Wheelbase	mm	2,600
Ground Clearance	mm	170
EXTERIOR		
Headlamps		Projector Type with Auto Light Control
Front Fog Lamps		With
Daytime Running Lamps (DRL)		With
Power Side Mirrors		With Side Turn Signal Lamps
Front & Rear Wipers		With
INTERIOR & CONVENIENCE		
Overhead Console		With Map Lamps & Sunglass Holder
Room Lamp		Center Lamp & Luggage Lamp
Trip Computer		With
Audio System		Radio with Radio Data System and Mono LCD
Connectivity		AUX, USB, & Bluetooth
Speakers		6 (4 + 2 Tweeters)
Steering Wheel Material		Polyurethane
Steering Wheel Remote Control		With
Key System		Smart Key with Push-Start Button
Drive Mode Select		With
Power Door Locks		With
Seat Material		Fabric
Seat Adjustment	Front	Sliding & Reclining
	Rear	6:4 Split Type Folding
Power Windows		With Driver Auto-Up & Down
Air Conditioning		Manual Type
Rear Covering Shelf		With
SAFETY & SECURITY		
Airbags		6 Airbags: Front, Side, & Curtain
Tire Pressure Monitoring System (TPMS)		With (Low Line)
Anti-Lock Braking System (ABS)		With
Immobilizer		With
Child Seat Anchor		With
Seatbelts	Front	3-Point Emergency Locking Retractor (ELR)
	Rear	Side: 3-Point Emergency Locking Retractor (ELR) Center: 2-Point Static

- Specifications and color line-up may vary without prior notice.
- Photos may vary from actual unit and accessories.
- Some of the features may not be available in other regions or variants. Consult your dealer on the features available.
- Some of the equipment described in this catalogue may not be supplied as standard equipment and may be available at extra cost. Hyundai Asia Resources, Inc. reserves the right to change specifications and equipment without prior notice.



Call us now
(02) 8-877-4977 | (0917) 877-4977



hyundaiph



@hyundaiph



HyundaiPH

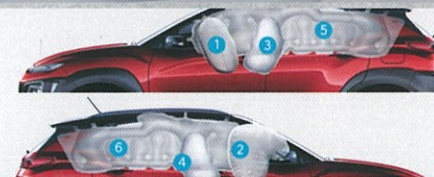
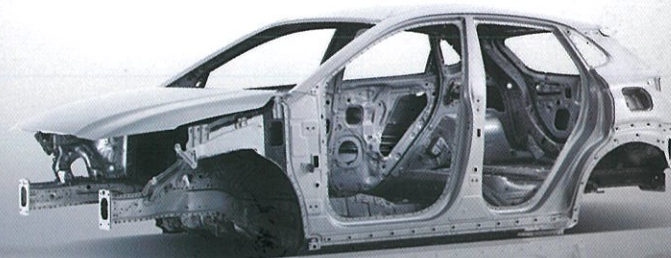


OFFICIAL DISTRIBUTOR OF HYUNDAI:
HYUNDAI ASIA RESOURCES, INC.

Issued by HARI on Mar 2020. Ver1.03.2020

The SUPERSTRUCTURE.™

The Kona features an ultra-rigid vehicle chassis at its core, which we call the SUPERSTRUCTURE™. We built it with our very own Advanced High-Strength Steel, designed to be stronger, stiffer and lighter than conventional steel, to provide greater benefits in safety, ride comfort and fuel economy. In the event of a collision, the SUPERSTRUCTURE™ helps protect occupants inside the cabin by absorbing harmful energy and redirecting it away from the passenger compartment.



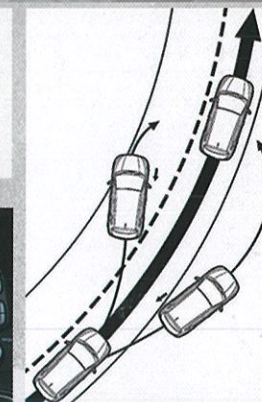
6 Airbags



2.0 NU MPI; Atkinson engine

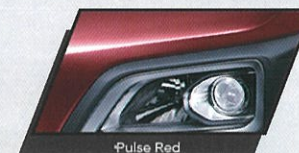


Floating Type Radio

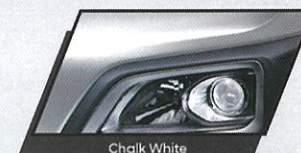


Electronic Stability Control (ESC)

COLORS



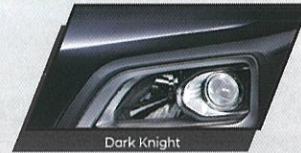
Pulse Red



Chalk White



Lake Silver



Dark Knight

For more inquiries, you may contact: